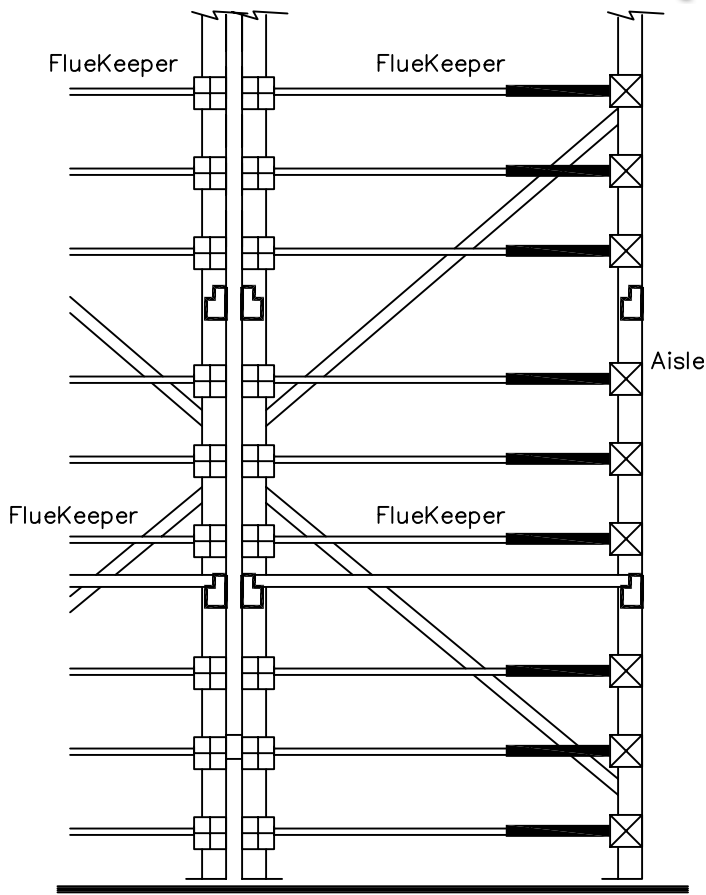
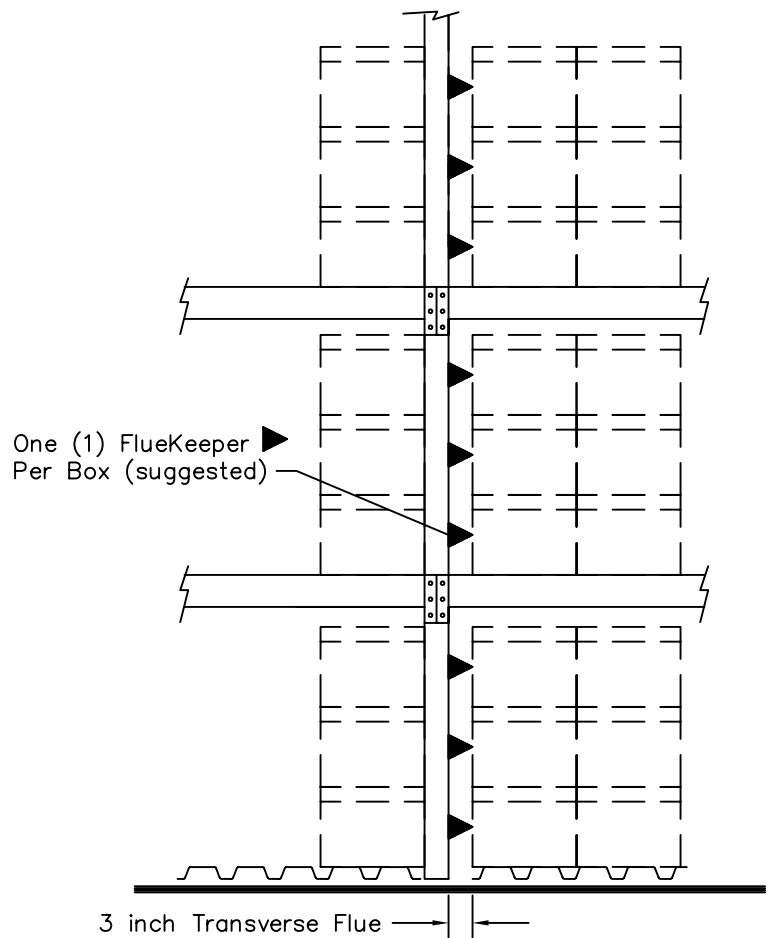


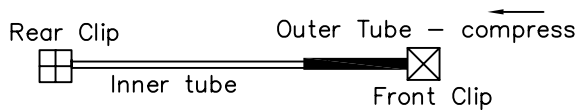
FlueKeeper® INSTALLATION



Side Elevation



Front Elevation



Unit Assembly



Front Clip Outer Tube



Rear Clip

Inner tube

FLUEKEEPER INSTALLATION

1. Install Rear Clip on Inner Tube
2. Install Front Clip on Outer Tube
3. Insert Inner Tube into Outer Tube
4. Insert Rear Clip into post holes
5. Compress Outer Tube
6. Insert Front Clip into post holes
7. Release Assembly